

Task Card # 6

Objectives:

- ↪ Participants will be able to a photo album within DreamweaverMX.
- ↪ Participants will be familiar with the colour scheme function.
- ↪ Participants will use the site function to publish their websites.

Step #1: Is there a way that I can quickly upload all my digital images?

⇐ From the top toolbar, click on “**Commands**” then “**Create Web Photo Album...**”. A new window will appear. Insert the title, subheading and any other information in the fields, and then use the “**Browse...**” button beside the “**Source Images Folder**” to find the folder where your pictures are currently located. This folder can be anywhere on your computer or CD drive or floppy disk. Then select or create a folder on your site for the album by click on “**Browse...**” beside the “**Destination Folder**” field. Click “**OK**” and the web photo album will be created for you.

Create Web Photo Album

Photo Album Title:

Subheading Info:

Other Info:

Source Images Folder: Browse...

Destination Folder: Browse...

Thumbnail Size: 100 x 100 Show Filenames

Columns:

Thumbnail Format: JPEG - Better Quality

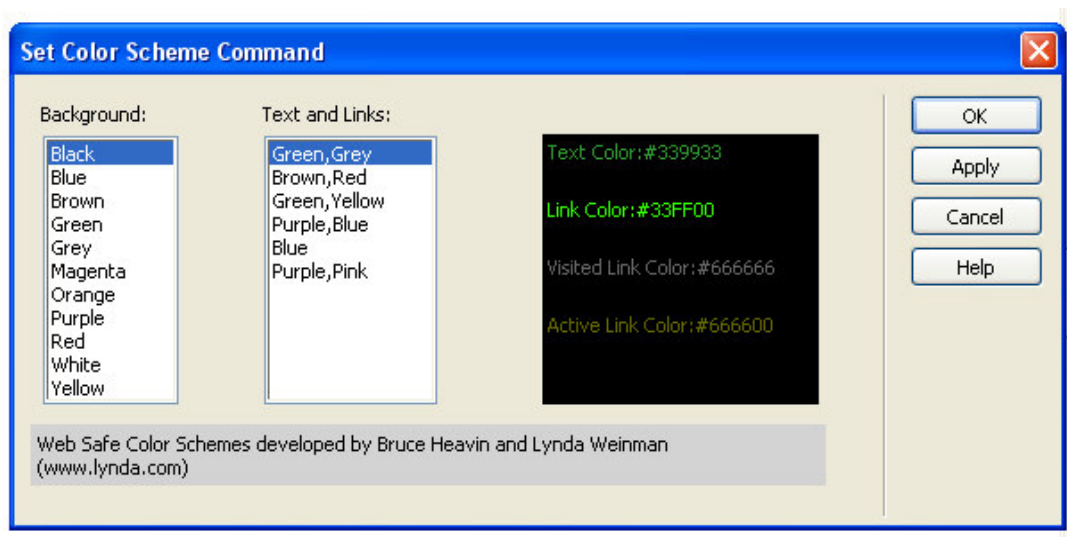
Photo Format: JPEG - Better Quality Scale: %

Create Navigation Page for Each Photo

OK
Cancel
Help

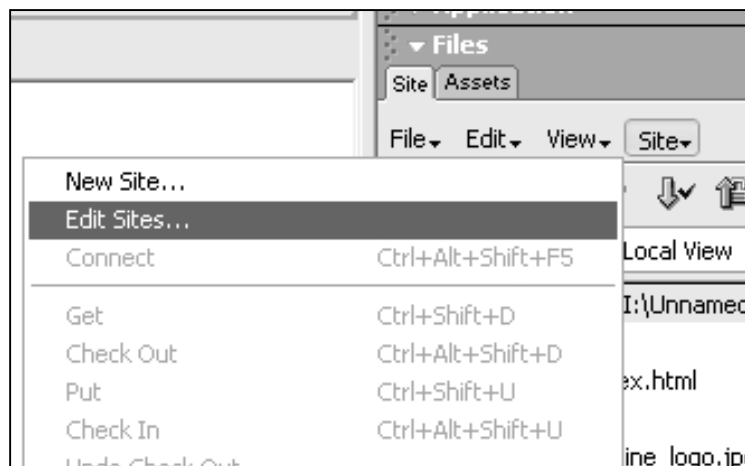
Step #2: Can I easily create a colour scheme that is sure to work well on the internet?

- ⇐ From the top toolbar, click on “**Commands**” then “**Set Color Scheme**”. A new window will appear. Click on the different options to customize your colour scheme. This is especially effective with students that may not understand the best contrasting colours to use.



Step #3: My pages look great! How do I put them on the internet?

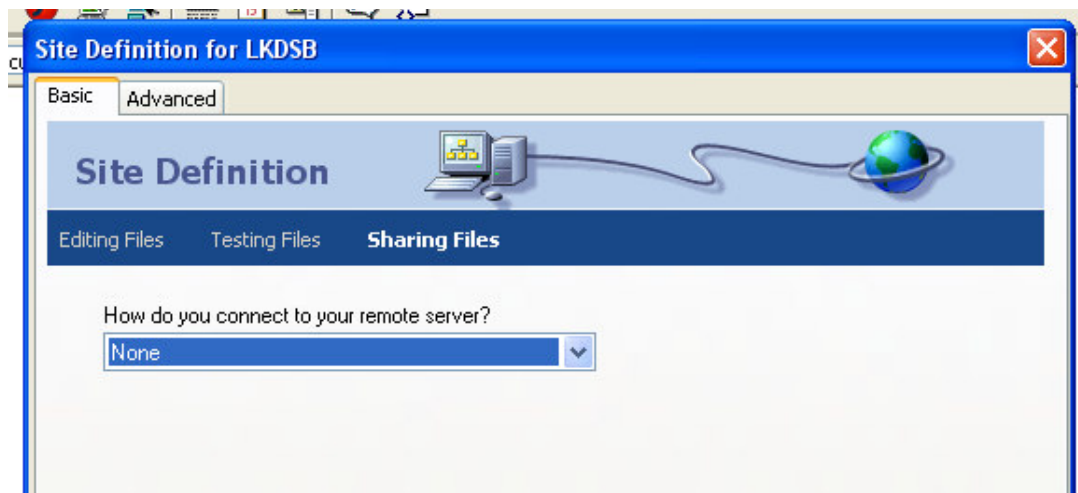
- ⇐ When we set up our website, we did not enter any file transfer information. That information will be added now. Within the “**Site**” sidebar, click on the toolbar option named “**Site**”. In the drop down menu that appears, select “**Edit Sites...**”



⇐ Within the “**Edit Sites**” pop up menu that appears, select your website and then click the “**Edit...**” button.



⇐ In the wizard that appears, click on next until you reach the screen that asks you: “**How do you connect to your remote server?**”



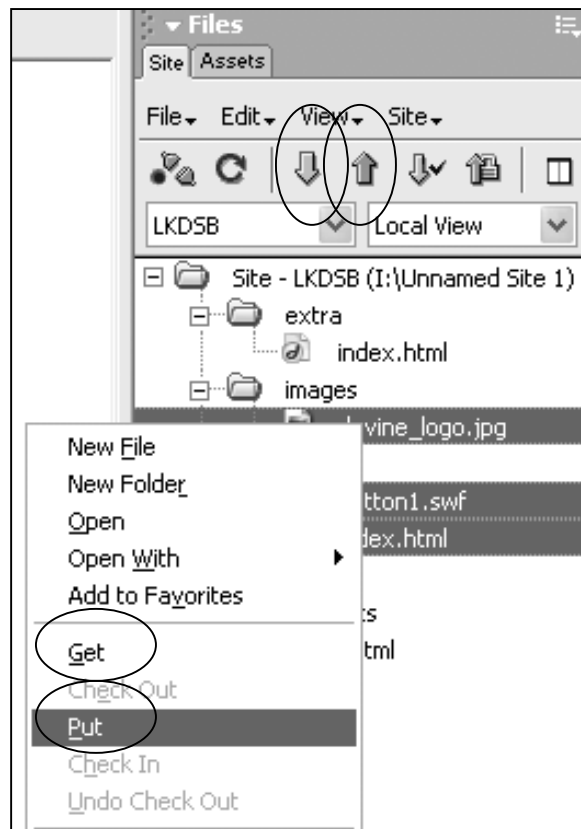
- ⇐ Within the drop down menu below: **“How do you connect to your remote server?”** select the **“FTP”** option. There will be a host of options, please insert the appropriate information in the appropriate box (this will be different for each website).
- Then click on **“Next”** until you reach the **“Finish”** button. Click **“Finish”** and your uploading update will be complete.

The screenshot shows the 'Site Definition for LKDSB' dialog box in Dreamweaver MX. The 'Basic' tab is selected, and the 'Advanced' tab is also visible. The dialog has a title bar with a close button (X) in the top right corner. Below the title bar, there are two tabs: 'Basic' and 'Advanced'. The main content area is titled 'Site Definition' and features a decorative header with a laptop, a server tower, and a globe connected by a cable. Below this header, there are three sub-sections: 'Editing Files', 'Testing Files', and 'Sharing Files'. The 'Sharing Files' section is currently active. The main content area contains the following fields and controls:

- A question: 'How do you connect to your remote server?' followed by a dropdown menu with 'FTP' selected.
- A question: 'What is the hostname or FTP address of your Web server?' followed by an empty text input field.
- A question: 'What folder on the server do you want to store your files in?' followed by an empty text input field.
- A question: 'What is your FTP Login:' followed by an empty text input field.
- A question: 'What is your FTP Password:' followed by an empty text input field and a checkbox labeled 'Save'.
- A 'Test Connection' button.

At the bottom of the dialog, there are four buttons: '< Back', 'Next >', 'Cancel', and 'Help'.

- ⇐ When you are ready to upload your files you will be able to do that within the “**Site**” sidebar. Click on the files or folders that you would like to upload. If you are uploading more than one file or folder, then hold down the control button as you click. Then opposite click on the highlighted files and select “**Put**” from the menu or click on the blue arrow pointing up above the list of files.
- ⇐ If you would like to download or get any folders or files from the server, use the drop down menu that currently says “**Local View**” and select “**Remote View**”. Then when you have connected to the server, select the files that you want to get and opposite click on the highlighted files and select “**Get**” from the menu or click on the green arrow pointing down above the list of files.



- ⇐ Another area that you can quickly upload your current page is just above the editing region. Save your page. Click on a toolbar button that has two arrows on it, and select “**Get**” or “**Put**” from the menu for the appropriate task.

